



revised 12/7/16



**the king's school**

*Preparing Tomorrow's Leaders Today!*

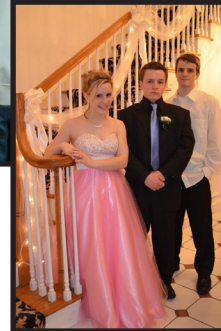


A Private Christian School in Upstate NY serving Kindergarten through 12th grade. Founded in 1983, we provide for over 15 communities in Warren, Washington, and Saratoga Counties. The King's School is conveniently located within the school busing distance of Saratoga, South Glens Falls, Queensbury, Lake George, Corinth, and Hadley/Luzerne. Currently over 20 churches are represented in our staff and students, making The King's School a wonderful expression of the wider Body of Christ.

From its birth, The King's School has been answering God's call of "Preparing Tomorrow's Leaders Today." Central to that call is the understanding that every child is born according to God's will and that each child has a God-given destiny to fulfill.

**Boldly we strive to produce students who:**

- think deeply with a Biblical basis
- have a thrilling awareness of their abilities and gifts
- are growing in genuine Godly character traits
- are developing creativity and uniqueness
- are confident with one-on-one and group communication
- are learning healthy Conflict Resolution (Matthew 18)
- are R.F.A. - Ready For Anything to which God may call them



**Our Curricula is designed intentionally to:**

- commit to never "educating" children out of their God-born creativity and vitality
- develop critical thinkers who are passionate about learning
- encourage and implement Multiple Learning Styles
- create servant-hearted young people
- produce men and women wholly devoted to God's purposes in their families, churches, communities, and the world

Visit us at [www.kingsschool.info](http://www.kingsschool.info) for our history, statement of faith, and more!



**A Ministry of Church of the Nations**

P.O. Box 300, Lake Luzerne, NY 12846 ~ (518) 654-6230 ~ Fax 654-7310 ~ [main\\_office@kingsschool.info](mailto:main_office@kingsschool.info) ~ <http://kingsschool.info>



## **Preparing Tomorrow's Leaders Today!**

*But you are the ones chosen by God, chosen for the high calling of priestly work, chosen to be a holy people, God's instruments to do His work and speak out for Him, to tell others of the night-and-day difference He made for you—from nothing to something, from rejected to accepted. 1 Peter 2:9-10*



# **...Helps Kids Grow!**

*The King's School, which began in 1983, is a non-profit educational ministry of Church of The Nations (COTN). From the birth of the school, God has called us to "Preparing Tomorrow's Leaders Today." Central to that call is the understanding that every child is born according to God's will and choice, and that each child has a God-given destiny to find and fulfill (Psalm 139:13-16).*

*"We face a significant decision when considering the foundation of our children's education. We want to protect them from the perils that choke out an interest in learning.*

*We want to provide them with a safe and fertile haven where they can be rooted in firm, unchanging truths, where they can grow tall and strong in knowledge and confidence, where they are encouraged to branch out into all of God's wonders that interest them, and where they can mature into happy, productive individuals fully expressing the potential God plants in them.*

*Christian schools help children grow by showering them with the individual attention and specific help they need to be excited while learning, and by providing a climate in which poor behavior is consistently corrected and fruitful behavior is gladly encouraged.*

*For the children we so dearly cherish, it is important that we provide the best learning environment possible. Christian schools help kids grow!" A message from the Association of Christian Schools International*

*The King's School is registered with the New York State Department of Education and has the privilege of offering Regents and Advanced Regents diplomas.*





*Preparing Tomorrow's Leaders Today!*

## *How do I enroll my child...*

INDEX AND CHECKLIST	AFTER ACCEPTANCE
<p><u>RECEIVED AT INTERVIEW</u></p> <p><i>Financial information sheet</i></p> <p><i>Current Calendar</i></p> <p><i>Hot Healthy Lunch</i></p> <p><i>After School Offerings</i></p> <p><i>Dress Code and Casual Day</i></p> <p><i>Land's End Catalog</i></p> <p>___ <i>Application (both sides)</i></p> <p>___ <i>Family Information</i></p> <p>___ <i>Student Information (Code of Conduct)</i></p> <p>___ <i>Transfer of Records</i> <small>(previous school records must be received before acceptance including 504s and IEPs)</small></p> <p>___ <i>Emergency Card (at visiting day)</i></p> <p><small>* Contact the Business Office (<a href="mailto:business_office@kingsschool.info">business_office@kingsschool.info</a>) to formulate the Tuition Payment Plan.</small></p>	<p><u>RECEIVED AFTER ACCEPTANCE</u></p> <p><i>Student Handbook</i></p> <p><i>Student Supply List</i></p> <p><u>ITEMS THAT NEED TO BE RETURNED OR COMPLETED...</u> ...before the first day of school.</p> <p>___ <i>Application</i></p> <p>___ <i>Enrollment Fee paid</i></p> <p>___ <i>Tuition Payment Plan in Place</i> <small>(online at <a href="http://kingsschool.info">kingsschool.info</a>)</small></p> <p><b><u>(FORMS THAT NEEDS ... TO BE RETURNED BY 1ST DAY)</u></b></p> <p>___ <i>Health Office Packet</i></p> <p>___ <i>Financial Information Form</i> <small>(signed)</small></p> <p>___ <i>Book Requisition Form</i> <small>(signed)</small></p> <p><b><u>(IF NEEDED ... FORMS THAT NEED TO BE RETURNED)</u></b></p> <p>___ <i>Student Driver Form</i> <small>(if student will be driving to or from school)</small></p> <p>___ <i>Field Trip Driver Questionnaire</i></p> <p>___ <i>Volunteer Form</i> <small>(if you wish to volunteer or help in the classroom)</small></p> <p>___ <i>School District Bussing Form</i> <small>(please return to your local bus garage)</small></p>





# The King's School

## FINANCIAL INFORMATION 2017-18

### K-12TH GRADE - ANNUAL FEES:

**\*\*Operational Fee:** (see billing information below).....\$250.00 Per Student

**\*\*Re-enrollment Fee:**

Paid on or before April 28 ..... \$ 100.00 Per Student

Paid after April 28 .....\$ 120.00 Per Student

Paid after May 26, there will be an additional late processing fee of \$100 per family.

**\*\*New Student Registration Fee:** .....\$200.00 Per Student

Field Trips: There will be an occasional charge to cover transportation and admission costs.

Sports Teams: Sports fees are determined at the beginning of each school year.

General Account: Any annual fees that are paid within the school year and are not depleted at the end of the year will remain in the school's general account.

**\*\*Non-Refundable Fees**

TUITION:		PER 11 MONTHLY PAYMENTS	YEARLY COST
K – 12 <sup>th</sup> GRADES	1 <sup>st</sup> child.....	\$367.78.....	\$4,045.60
	2 <sup>nd</sup> child.....	279.85.....	3,078.40
	3 <sup>rd</sup> child ..(and subsequent children).....	181.53.....	1,996.80

### BILLING:

We will accept tuition payments at the school when paying in full. FACTS payments are made July - May. You may opt to have your operational fees, and/or your fundraising contribution, included in these monthly payments. You will be given an invoice and information regarding the FACTS tuition program once we receive your enrollment fee.

### IMPORTANT INFORMATION:

Tuition may be paid-in-full before the first day of school, or by monthly ACH direct debit through FACTS Management Program.

Late Enrollment: Enrollment during the school year requires tuition payments for the full quarter in which the student enrolls. Operational fees are pro-rated to the half year and fundraising obligations quarterly.

Operational Fee: Annual fee that covers administrative, operational, and educational costs (including books) and tuition collection fees.

Fundraising: Each family is required to raise \$200 per year, per student, with a maximum requirement of \$400 per family due by June 1st, 2018. If you choose to not participate in fundraising, you may include this fee in your FACTS payment plan or pay in full to the school by June 1st, 2018.

Tuition Discount: A \$50 discount is applied to K-12 tuition ONLY if paid in full by July 1, 2017. Please indicate your intention to pay tuition in full when you enroll your child.

Transcripts: Transcripts and diplomas will not be released until tuition and other fees, including operational and fundraising, have been paid in full.

Delinquent Accounts: Student records may be withheld if account is 30 days delinquent. Students may not attend school or take examinations if the account is past 60 days delinquent. Please note that if there is a balance due on tuition from a previous school year, students may not re-enroll for the next school year.

Withdrawal: Withdrawal/Early Release for any reason requires payment of tuition for full quarter in which the student withdraws. Operational fees and fundraising obligations may be pro-rated.

Parent's Signature: \_\_\_\_\_

Print Name \_\_\_\_\_

Date: \_\_\_\_\_





*The King's School*  
*Preparing Tomorrow's Leaders Today!*

## **DRESS CODE POLICY**

The King's School is a professional environment. Our dress code is meant to build respect and encourage us to be our best. All students must be in school uniform each school day. There may be exceptions for special or formal events, at which time written criteria will be made available to students and families. USE THE LANDS' END AS A GUIDE FOR FIT, COLORS, STYLES, AND FABRICS.

### **THE OFFICIAL SCHOOL UNIFORM**

Every student is required to have the official school uniform, which consists of a blue (light) polo shirt (long or short sleeve), and beige khaki\* bottoms or beige khaki\* jumper. The official uniform will be worn for specified school events. Whenever an official school uniform is required, shoes should be in especially good condition, and accessories and socks should be simple and appropriate. These decisions are made at the discretion of the Principal.

### **POLOS**

Students are required to wear any solid color classic polo shirt (without a logo, insignia, or embroidered item, consisting of three or less buttons) on regular school days, unless notified that they must wear the Official School Uniform. Shirt hems shall cover the midriff while bending, kneeling, or when arms are raised. The new sport tech/golf fabric is accepted for polos, as long as the polo meets all the other specified dress code regulations.

### **SWEATERS & BLAZERS**

Navy blue, plain, solid-colored - blazer, sweaters, cardigans, or sweater vests may be purchased from anywhere. No hoodies, fleece, or sweatshirt material.

### **PANTS & SHORTS**

Beige khaki\* or classic navy, corduroy, chino, or cargo pants or shorts with no designs from any store may be worn. Bottoms shall be worn at the natural waist. Short hems will go to the top of the knee.

### **SKIRTS, SKORTS & JUMPERS**

Beige khaki\* or classic navy skirts, skorts, or jumpers with no designs from any store may be worn by females only. Also any Classic Navy/Evergreen Plaid skirt, skort, or jumper from the Lands' End catalog may be worn. This plaid is known elsewhere as "blackwatch." No other plaids may be worn. Land's End long or short sleeve polo dress (K-6, navy blue only) must be to the top of the knee. All skirts, skorts, and jumpers will be worn at the natural waist and hems will go to the top of the knee.

### **ACCESSORIES**

Accessories must be in good condition and appropriate for the day's activities. Any questions as to the appropriateness of a given article of clothing or accessories should be addressed to the principal.

### **SHOES\*\***

Shoes and sneakers should be serviceable and in good condition. Heels should be under three inches and not spiked. Please bring appropriate shoes for recess.

### **UNIFORM VIOLATIONS**

If a student arrives at school "out of uniform," that student will be asked to change into a school-issued borrowed substitute, kept at school for in-school suspension, or sent home. "Out of uniform" includes any items of clothing that are not specified in the school uniform dress code, or any uniform items that are of concern. These decisions are made at the discretion of the principal.

### **GYM DRESS CODE**

The approved King's School gym uniform is a plain black, micro-mesh gym short with at least a 5" inseam and a plain gray, crew-necked T-shirt. T-shirts must not be tight fitting, 'baby-doll' style, or include any lycra/spandex. Plain black or plain gray sweatpants, and sweatshirts are permitted for gym. Yoga pants will be allowed, but must be worn UNDER King's approved 5" black mesh shorts. No leggings are allowed. Spirit wear is permitted for all gym approved items.

If a student desires to have The King's School logo on their gym uniform, the following options are available:

- 1) Order gym clothes or spirit wear from MyLocker.com using this link <http://www.mylocker.net/new-york/hadley/the-kings-school/index.html>. Be sure to follow the approved gym uniform requirements for gym uniform. The King's School sports program receives 12% of all sales.
- 2) Order these items from Land's End and have "The King's School" logo embroidered on them. Logo ID# is 0733268K.

NO OTHER LOGOS, BRANDS, OR MARKINGS ARE ACCEPTABLE.

ALL PREVIOUSLY APPROVED KING'S SCHOOL GYM UNIFORMS IN GOOD CONDITION WILL STILL BE ACCEPTED FOR THE CURRENT SCHOOL YEAR.

### **NOT ALLOWED**

Unnatural hair or lip coloring	Hats (except school sponsored occasions)	Exposed undergarments or camisoles w/lace
Distracting haircuts or styles	Body piercings	Earrings or make-up for boys
Outerwear in class	K-6th grade girls make-up (except lip gloss)	Rips or holes
**Flip Flops - (Any shoe that goes between the toes without a strap around the heel is considered a flip flop.)		
**No heels or backless shoes allowed in playground.		

\*PLEASE REMEMBER TO USE THE LANDS' END CATALOG AS A GUIDE FOR FIT, COLOR, STYLE AND FABRICS.

# CASUAL AND THEME DAY GUIDE

At The King's School we enjoy casual dress days and events! We have established guidelines for casual or themed events in order to maintain our respectful learning environment.

We would ask that parents and students work together to ensure that students come to school dressed neatly, modestly and comfortably. **Clothing should be professional, clean, untattered, hemmed, and without holes.**

Formal wear is acceptable and encouraged for specific occasions, and must be appropriate and modest. All dresses are to be brought into school for preapproval by the principal before a formal event. It is expected that students in formal wear conduct themselves in a responsible, formal manner.

## BOYS

- Pants:
  - Pants or shorts must be worn at the student's natural waist.
  - Pants can include jeans, corduroys, and dress pants.
- Shirts:
  - Buttoned to the top one or two buttons, sleeved.
  - T-shirts with acceptable logos, pictures, and words may be worn.
  - Sweaters, fleeces or hoodies (with hoods off) may be worn over casual dress code shirts.
  - Shirt hem shall cover the mid-drift while bending, kneeling, or arms are raised.

## GIRLS

- Skirts/dresses:
  - Hemmed to the top of the knee or longer.
- Pants:
  - Pants, shorts, or skirts must be worn at the student's natural waist.
  - Pants can include jeans, corduroys, and dress pants.
- Shirts/blouses:
  - Buttoned to the top one or two buttons, modest necklines, sleeved.
  - T-shirts with acceptable logos, pictures, and words may be worn.
  - Sweaters, fleeces, or hoodies (with hoods off) may be worn over casual dress code shirts.
  - Shirt hem shall cover the mid-drift while bending, kneeling, or arms are raised.

## SPIRIT WEAR

- Spirit wear can be ordered from mylocker.com by using the link below.
- The King's School sports program receives 12% of all sales.
- <http://www.myl locker.net/new-york/hadley/the-kings-school/index.html>

## NOT ALLOWED

- Outerwear in class
- Unnatural hair or lip color
- Distracting haircuts or styles
- Inappropriate logos or images
- Halter, tank, tube, or **STRAP TYPE** shirts
- Hats *(except school sponsored occasions)*
- Exposed undergarments
- Body piercings or Earrings for boys
- **ATHLETIC PANTS/SHORTS OR SWEAT WEAR**
- Rips or holes



# the King's School

*Preparing Tomorrow's Leaders Today!*

**A Ministry of Church of the Nations**

P.O. Box 300, Lake Luzerne, New York 12846-0300 ~ (518) 654-6230 ~ Fax (518) 654-7310

main\_office@kingsschool.info ~ <http://kingsschool.info>



## CREDITED COURSES

Alternative Academic Plans for upperclassmen

Art

Bible

Black & White Photography

BOCES

Culinary Arts

Digital Photography

Elementary & High School Drama Club

English

Field Trips

Global Studies

History

Mathematics

Moody Mega Math Challenge

Music Theory and Chorus, K-6

Physical Education

Regents and Advanced Regents Diplomas

Sciences

Science, Cultural, and Performing Arts Fairs

Spanish

Speech, Dramatic Reading, Poetry Contests, and Spelling Bee

Worship Team

## ATHLETIC PROGRAMS

100 Acres of land

Spacious gym ~ New floor ~ Full size basketball court

Basketball – women's and men's

Cheerleading

Soccer

Formal Sports Banquet

## LOCAL AND INTERNATIONAL MISSIONS

Liberia, Kenya, Spain, Ireland, Columbia

## AFTER SCHOOL ENRICHMENT

Chess club

Private music lessons in piano, guitar, percussion instruction

Running club

Sports clinics

Worship Dance

Wrestling (K-6)

Programs being added every year!



# the king's school

## HOT-HEALTHY LUNCH PROGRAM

September

Monday	Tuesday	Wednesday	Thursday	Friday
	1	2	3	4

Here is a sample of our  
monthly hot-heathly lunch menu options.

7	8	9	10 <b>Pizza</b> <i>Rocco's pizza</i> <b>Brown Bag Lunch</b> Sunflower butter and all natural grape jelly on whole grain bread with a choice of 2 snacks and a drink.	11 <b>Baked Chicken and Rice</b> <i>served with fresh fruit</i> <b>Brown Bag Lunch</b> Sunflower butter and all natural grape jelly on whole grain bread with a choice of 2 snacks and a drink.
14 <b>Beef Quesadilla with cheese, onions and peppers</b> <i>side of salsa and sour cream</i> <b>Brown Bag Lunch</b> Sunflower butter and all natural grape jelly on whole grain bread with a choice of 2 snacks and a drink.	15 <b>Meatloaf</b> <i>served with macaroni salad</i> <b>Brown Bag Lunch</b> Sunflower butter and all natural grape jelly on whole grain bread with a choice of 2 snacks and a drink.	16 <b>Cheeseburger Macaroni Soup</b> <i>served with salad and roll</i> <b>Brown Bag Lunch</b> Sunflower butter and all natural grape jelly on whole grain bread with a choice of 2 snacks and a drink.	17 <b>Pizza</b> <i>Rocco's pizza</i> <b>Brown Bag Lunch</b> Sunflower butter and all natural grape jelly on whole grain bread with a choice of 2 snacks and a drink.	18 <b>Ham and potato casserole</b> <i>Broccoli and cheese</i> <b>Brown Bag Lunch</b> Sunflower butter and all natural grape jelly on whole grain bread with a choice of 2 snacks and a drink.
21 <b>Chefs Salad</b> <i>served with roll</i> <b>Brown Bag Lunch</b> Sunflower butter and all natural grape jelly on whole grain bread with a choice of 2 snacks and a drink.	22 <b>Ham and Swiss Sandwich</b> <i>Served on whole grain bread with chips and a pickle</i> <b>Brown Bag Lunch</b> Sunflower butter and all natural grape jelly on whole grain bread with a choice of 2 snacks and a drink.	23 <b>Cheddar Broccoli Soup</b> <i>Roll and salad</i> <b>Brown Bag Lunch</b> Sunflower butter and all natural grape jelly on whole grain bread with a choice of 2 snacks and a drink.	24 <b>Pizza</b> <i>Rocco's pizza</i> <b>Brown Bag Lunch</b> Sunflower butter and all natural grape jelly on whole grain bread with a choice of 2 snacks and a drink.	25 <b>Chicken and Broccoli Alfredo</b> <i>served over penne pasta with salad and garlic toast</i> <b>Brown Bag Lunch</b> Sunflower butter and all natural grape jelly on whole grain bread with a choice of 2 snacks and a drink.





the king's school

Preparing Tomorrow's Leaders Today!

# STANDARD OF CONDUCT

## *Jr/Sr High School* ANNUAL STUDENT PLEDGE

*At The King's School, students are expected to exhibit a high degree of respect toward God, and towards those that God has placed in leadership over their lives, and each other. At all times, whether inside or outside of school, King's students will work to display the kind of attitudes, conversations, and behavior that will distinguish them as young men and women of God.*

\* I understand and I will comply with the above statement: \_\_\_\_\_

\* I am responsible to wear school dress code on all the school days that it is required: \_\_\_\_\_

\* I am responsible for any sports uniforms and equipment that I borrow from the school, and I understand that I may have to pay for any that I lose or damage: \_\_\_\_\_

\* I will respect school property, and I understand that I may have to pay for any damage that I incur upon the school property: \_\_\_\_\_

\* I understand that my conduct outside of school includes my social networking (FaceBook, Twitter, SnapChat, Instagram, Google+, etc.) having positive conversations and appropriate subject matters online: \_\_\_\_\_

\* I understand that ANY association with drugs, alcohol, or any other illegal activity outside of school can be grounds for suspension or expulsion: \_\_\_\_\_

\* I have read my School Handbook and am accountable to its contents: \_\_\_\_\_

Student's Signature: \_\_\_\_\_ Date \_\_\_\_\_

Student's Name: (Please print) \_\_\_\_\_ Date \_\_\_\_\_

Parent's Signature: \_\_\_\_\_ Date \_\_\_\_\_

Parent's Name: (Please print) \_\_\_\_\_ Date \_\_\_\_\_

A Ministry of Church of the Nations

P.O. Box 300, Lake Luzerne, New York 12846-0300 ~ (518) 654-6230 ~ Fax (518) 654-7310  
main\_office@kingsschool.info ~ <http://kingsschool.info>

APPENDIX C-1







the king's school

Preparing Tomorrow's Leaders Today!

# STANDARD OF CONDUCT

## *Elementary School* ANNUAL STUDENT PLEDGE

*At The King's School, students are expected to exhibit a high degree of respect toward God, and towards those that God has placed in leadership over their lives, and each other. At all times, whether inside or outside of school, King's students will work to display the kind of attitudes, conversations, and behavior that will distinguish them as young men and women of God.*

- \* I understand and I will comply with the above statement: \_\_\_\_\_
- \* I am responsible to wear school dress code on all the school days that it is required: \_\_\_\_\_
- \* I will respect school property, and I understand that I may have to pay for any damage that I incur upon the school property: \_\_\_\_\_
- \* I have read my School Handbook and am accountable to its contents: \_\_\_\_\_

Student's Signature: \_\_\_\_\_ Date \_\_\_\_\_

Student's Name: (Please print) \_\_\_\_\_ Date \_\_\_\_\_

Parent's Signature: \_\_\_\_\_ Date \_\_\_\_\_

Parent's Name: (Please print) \_\_\_\_\_ Date \_\_\_\_\_





the king's school

A Ministry of Church of the Nations

P.O. Box 300, Lake Luzerne, New York 12846-0300 ~ (518) 654-6230 ~ Fax (518) 654-7310 ~ main\_office@kingsschool.info ~ http://kingsschool.info

DATE OF APPLICATION \_\_\_\_\_

DESIRED START DATE \_\_\_\_\_

## KINDERGARTEN - 12TH GRADE APPLICATION

*A new student fee of \$200 (non-refundable) is due with application.*

SCHOOL DISTRICT \_\_\_\_\_ SCHOOL CURRENTLY ATTENDING \_\_\_\_\_ GRADE \_\_\_\_\_

STUDENT'S NAME \_\_\_\_\_ AGE \_\_\_\_\_ DOB \_\_\_\_\_

ADDRESS \_\_\_\_\_ CELL \_\_\_\_\_

CITY \_\_\_\_\_ STATE \_\_\_\_\_ ZIP \_\_\_\_\_

REASON FOR ENROLLING \_\_\_\_\_

MOTHER'S NAME \_\_\_\_\_ HOME # \_\_\_\_\_

ADDRESS \_\_\_\_\_ CELL# \_\_\_\_\_

CITY \_\_\_\_\_ STATE \_\_\_\_\_ ZIP \_\_\_\_\_ EMAIL \_\_\_\_\_

EMPLOYER \_\_\_\_\_ WORK# \_\_\_\_\_

FATHER'S NAME \_\_\_\_\_ HOME # \_\_\_\_\_

ADDRESS \_\_\_\_\_ CELL# \_\_\_\_\_

CITY \_\_\_\_\_ STATE \_\_\_\_\_ ZIP \_\_\_\_\_ EMAIL \_\_\_\_\_

EMPLOYER \_\_\_\_\_ WORK# \_\_\_\_\_

### EMERGENCY CONTACTS

LIST **AT LEAST TWO** NEIGHBORS OR NEARBY RELATIVES WHO WILL ASSUME TEMPORARY CARE OF YOUR CHILD IF YOU CANNOT BE REACHED:

1. NAME \_\_\_\_\_ RELATIONSHIP TO STUDENT \_\_\_\_\_

CELL# \_\_\_\_\_ WORK# \_\_\_\_\_ HOME# \_\_\_\_\_

2. NAME \_\_\_\_\_ RELATIONSHIP TO STUDENT \_\_\_\_\_

CELL# \_\_\_\_\_ WORK# \_\_\_\_\_ HOME# \_\_\_\_\_

### MEDICAL INFORMATION

In case of accident or illness, I request the school to contact me. If the school is unable to reach me, I hereby authorize the school to call my emergency contacts indicated above. The school may call EMS and transport student to Saratoga Hospital or Glens Falls Hospital if necessary.

FAMILY PHYSICIAN'S NAME \_\_\_\_\_ OFFICE# \_\_\_\_\_ HOSPITAL PREFERRED \_\_\_\_\_

FOOD ALLERGIES \_\_\_\_\_ ALLERGIES TO MEDICINE/LATEX \_\_\_\_\_

IF YOUR CHILD HAS ANY MEDICAL CONDITIONS OR MEDICATIONS, PLEASE LIST THEM BELOW. \_\_\_\_\_

### FOR OFFICE USE ONLY

\_\_\_\_\_ Accepted \_\_\_\_\_ Declined Starting Date \_\_\_\_\_

\_\_\_\_\_ Total Monies Received (Check # \_\_\_\_\_) (Cash \_\_\_\_\_) Comments \_\_\_\_\_

\_\_\_\_\_ New Student Fee (\$200) \_\_\_\_\_

\_\_\_\_\_ Operational Fee (\$250) \_\_\_\_\_

\_\_\_\_\_ Tuition \_\_\_\_\_

\_\_\_\_\_ Other \_\_\_\_\_

**REFERRAL INCENTIVE** Referring family may qualify for a monetary reward at the end of your first year of fully paid tuition at King's.

Referred by: \_\_\_\_\_

Is this referring family currently enrolled @ King's. ( Yes ) ( No )

Pastor \_\_\_\_\_

Church phone: \_\_\_\_\_

---

---

---

---

Signature of Parent/Guardian \_\_\_\_\_ Date: \_\_\_\_\_

---

---

---

---

---

# FAMILY INFORMATION

*What are your child’s strongest abilities and gifts?*

---

---

---

---

---

*What Character traits would you like to see encouraged in your child?*

---

---

---

---

---

*What makes your child unique?*

---

---

---

---

---

*In what ways can we be a part of your child’s positive transition to The King’s School?*

---

---

---

---

---

---

*Describe your Church involvement. What is your Pastor’s contact information?*

---

---

---

---

---

---

## HISTORY

Please know that we value your privacy. History information is available only to the Administration. The Administration may choose to inform the staff only when such knowledge would help your child have a more successful experience. Thanks!

### Academic History

Describe your child's academic successes.

---

---

---

---

How can we encourage your child in their studies?

---

---

---

---

Tell us if your student needs academic or school support with:

- ☐ An IEP or 504 Plan
- ☐ A referral or diagnoses of learning or behavior identifications
- ☐ Situational or behavioral struggles

Please specify:

---

---

---

---

### Social History

Has the student had a history of any of the following?

- ☐ Family Discord
- ☐ School suspensions or behavioral referrals
- ☐ Legal Arrests or juvenile mandates
- ☐ Alternative religious or social involvement
- ☐ Substance use or abuse
- ☐ Psychological or social disorder

Please provide details for any checked items.

---

---

---

---



# STUDENT INFORMATION 5th-12th GRADE

*(To be filled out by the student. Please use another sheet of paper if needed.)*

*What are your strongest abilities and gifts?*

---

---

---

---

---

---

*What Character traits would you like to see encouraged in you?*

---

---

---

---

---

---

*What makes you unique?*

---

---

---

---

---

---

*In what ways can we be a part of your positive transition to The King's School?*

---

---

---

---

---

---

*Describe your Church involvement.*

---

---

---

---

---

---

*Describe your academic successes.*

---

---

---

---

---

*How can we encourage you in your studies?*

---

---

---

---

---

*What classes or activities would you enjoy at The King's School?*

---

---

---

---

---

*Student's Signature* \_\_\_\_\_

*Date* \_\_\_\_\_



# the King's School

"PREPARING TOMORROW'S LEADERS TODAY"

## TRANSFER OF RECORDS RELEASE

### RELEASING SCHOOL

### RECEIVING SCHOOL

Date Requested: \_\_\_\_\_

The King's School

Attention: Jodie Perry

School District: \_\_\_\_\_

P.O. Box 300, Lake Luzerne, NY 12846

Office: 654-6230 ~ Fax: 654-7310

Attention: \_\_\_\_\_

E-mail: jodie.perry@kingsschool.info

School: \_\_\_\_\_

Address: \_\_\_\_\_ City: \_\_\_\_\_ State: \_\_\_\_\_ Zip: \_\_\_\_\_

Phone: \_\_\_\_\_ Fax: \_\_\_\_\_

Please be advised that my child has \_\_\_\_\_ applied \_\_\_\_\_ been accepted to The King's School.

I HEREBY AUTHORIZE THE FOLLOWING INFORMATION TO BE RELEASED.

All Academic, Health, and Attendance Records. Please include all Social, Psychological and Behavioral Reports.

If applicable, please include all Individualized Education Plans and Standardized Testing Results.

### STUDENT INFORMATION:

NAME: Last, First, Middle

DOB:

CURRENT GRADE:

\_\_\_\_\_

\_\_\_\_\_

\_\_\_\_\_

\_\_\_\_\_

\_\_\_\_\_

\_\_\_\_\_

\_\_\_\_\_

\_\_\_\_\_

\_\_\_\_\_

\_\_\_\_\_

\_\_\_\_\_

\_\_\_\_\_

\_\_\_\_\_

\_\_\_\_\_

\_\_\_\_\_

Parent/Guardian Signature \_\_\_\_\_

School Official Signature \_\_\_\_\_

*A Ministry of Church of the Nations*

P.O. Box 300, Lake Luzerne, NY 12846 ~ Office 518-654-6230 ~ Fax 518-654-7310